

# Welcome to the RE-1/RE-2 Programming Webinar



Created by  
Paul Jones  
Technical Trainer



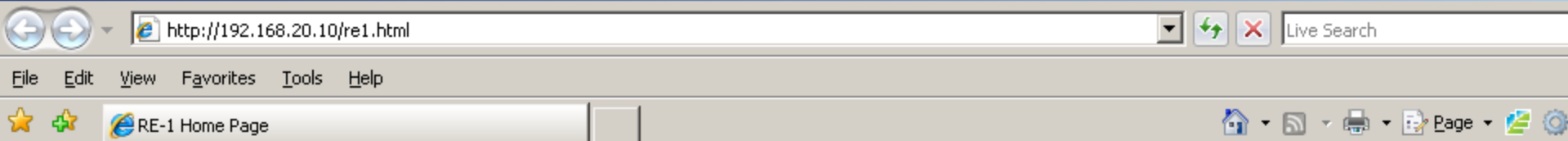
**Linear**<sup>®</sup>  
Building On Innovation.

# RE-1 or RE-2

The Linear RE-1 or RE-2 Residential Telephone Entry Systems can be programmed with three different methods. The programming for the RE-1 or the RE-2 program exactly the same. They can be programmed

- 1) Locally, (Using the on board keypad).
- 2) Using a touchtone telephone or
- 3) Using a computer with a dial up modem and a Browser.

This webinar will focus on the Browser based style of programming.



## Linear Residential Entry System

Version 2.11

### System Configuration

[Change Master Code or Number of Entry Code Digits](#)

[Set Date & Time](#)

[Set Holidays](#)

[Keypad Setup](#)

[Assign Relay # 2 Function](#)

[Set Relay Tones](#)

[Relay Schedule](#)

[Configure Transmitter Buttons](#)

[Miscellaneous Options](#)

[Set Time Zone # 1](#)

[Set Time Zone # 2](#)

[Set Time Zone # 3](#)

[Set Time Zone # 4](#)

After connecting with the RE-1, direct your browser to the IP Address. <http://192.168.20.10/re1.html>.

[Set Time Zone # 5](#)

[Set Time Zone # 6](#)

[Set Time Zone # 7](#)

### Media

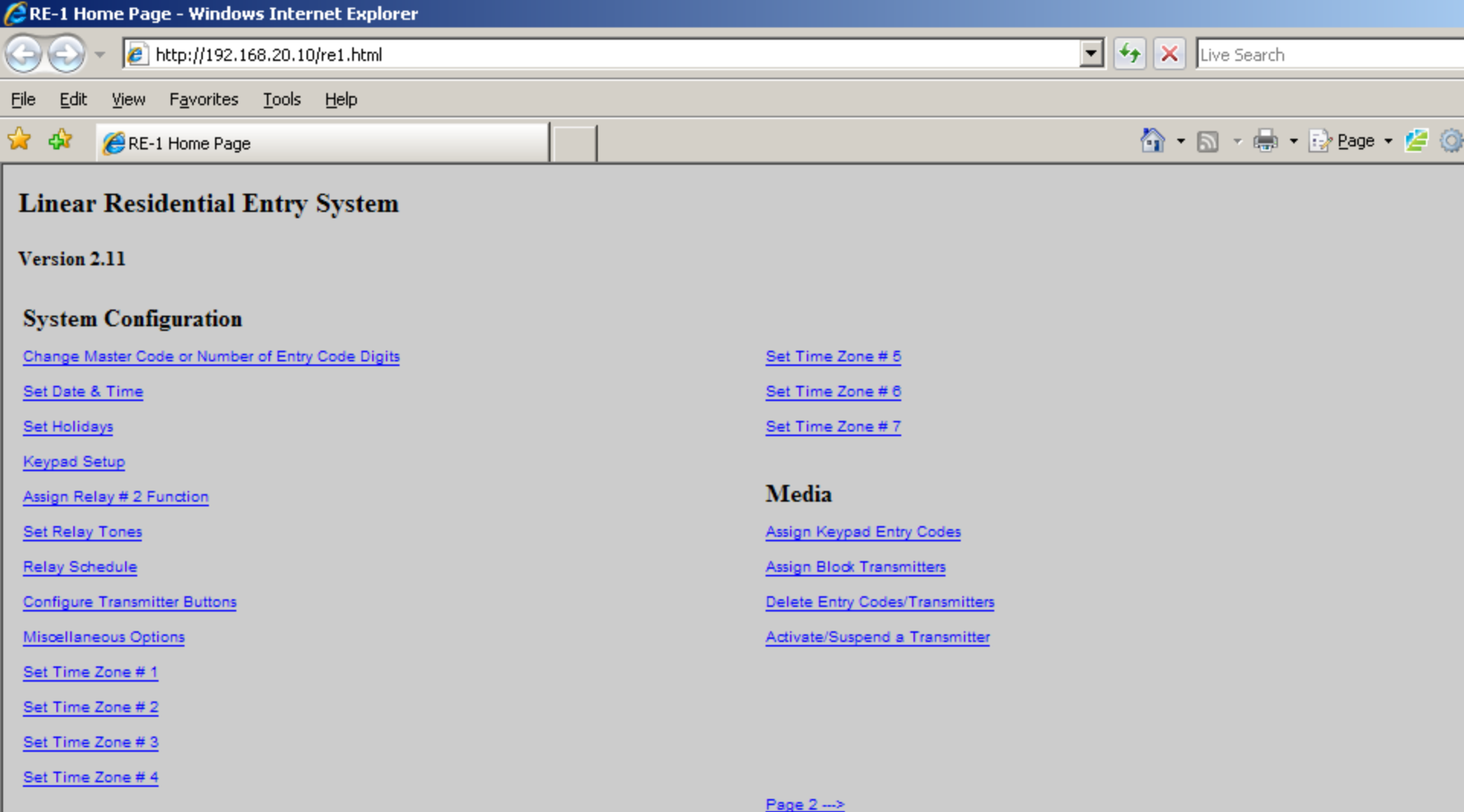
[Assign Keypad Entry Codes](#)

[Assign Block Transmitters](#)

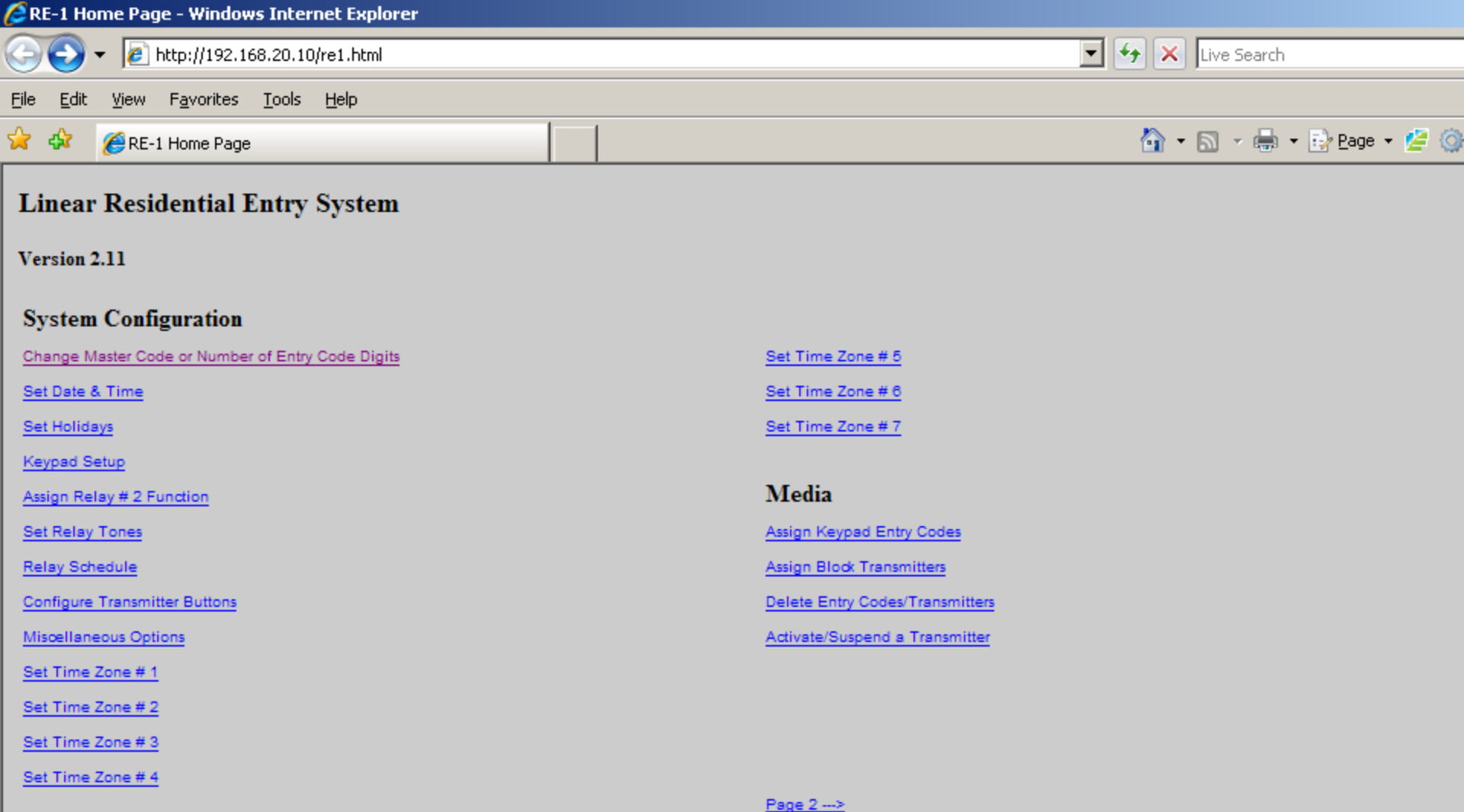
[Delete Entry Codes/Transmitters](#)

[Activate/Suspend a Transmitter](#)

[Page 2 --->](#)



This is the Home page. We will cover each of these sections individually.



We will start with the Change Master Code or Number of Entry Code Digits section

Change Master Code - Windows Internet Explorer

http://192.168.20.10/master.htm

File Edit View Favorites Tools Help

Change Master Code

## Change Master Code

Old Master Code:

New Master Code:

New Master Code:

Entry Code Digits:

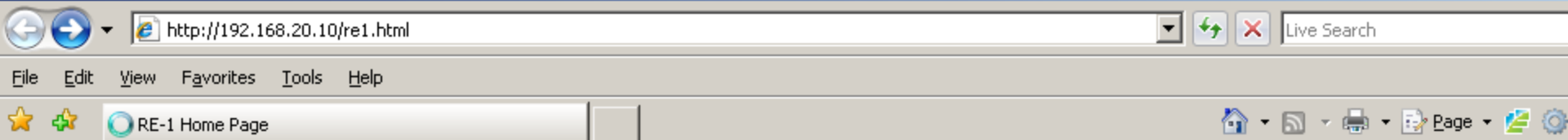
In order to change the Master Code, we first need to input the old SIX DIGIT Master Code then input the new SIX DIGIT Master Code, and confirm the new master code by entering it in again.

The Entry Code Digits field lets us change the digit length of the entry codes. They can be 1 to 6 digits in length. Once they are set, all the entry codes will have to be the same length.

**The submission completed successfully.**

Ok

After every submission, the unit will confirm if the submission was successful or unsuccessful.



## Linear Residential Entry System

Version 2.11

### System Configuration

[Change Master Code or Number of Entry Code Digits](#)

[Set Date & Time](#)

[Set Holidays](#)

[Keypad Setup](#)

[Assign Relay # 2 Function](#)

[Set Relay Tones](#)

[Relay Schedule](#)

[Configure Transmitter Buttons](#)

[Miscellaneous Options](#)

[Set Time Zone # 1](#)

[Set Time Zone # 2](#)

[Set Time Zone # 3](#)

[Set Time Zone # 4](#)

[Set Time Zone # 5](#)

[Set Time Zone # 6](#)

[Set Time Zone # 7](#)

### Media

[Assign Keypad Entry Codes](#)

[Assign Block Transmitters](#)

[Delete Entry Codes/Transmitters](#)

[Activate/Suspend a Transmitter](#)

[Page 2 --->](#)

The next field is [Set Date & Time](#)



Set Date and Time - Windows Internet Explorer

http://192.168.20.10/time.htm

File Edit View Favorites Tools Help

Set Date and Time

### Set Date and Time

Day of the Week: ☐ SUN ☐ MON ☒ TUE ☐ WED ☐ THU ☐ FRI ☐ SAT

Date:

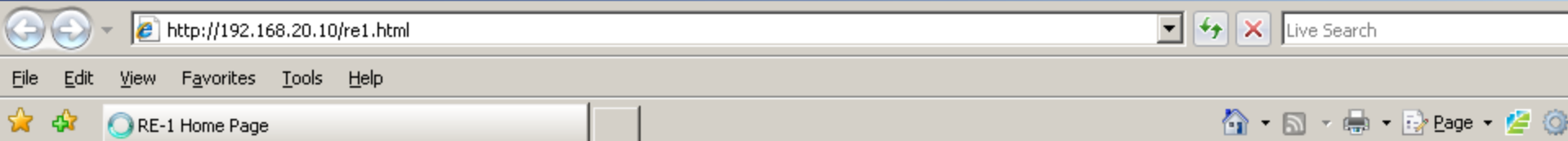
Time:

☐ AM  
☒ PM

Daylight Savings Time ☒ Enable ☐ Disable

Geographic Time Zone

In this field we can set the Date and Time of the unit. We can enable Daylight Saving Time if desired, also which Geographic Time Zone the unit is in. (Setting the Geographic Time Zone determines what time the Down light will turn on and off, if Down light is not desired, leave set to none).



## Linear Residential Entry System

Version 2.11

### System Configuration

[Change Master Code or Number of Entry Code Digits](#)

[Set Date & Time](#)

[Set Holidays](#)

[Keypad Setup](#)

[Assign Relay # 2 Function](#)

[Set Relay Tones](#)

[Relay Schedule](#)

[Configure Transmitter Buttons](#)

[Miscellaneous Options](#)

[Set Time Zone # 1](#)

[Set Time Zone # 2](#)

[Set Time Zone # 3](#)

[Set Time Zone # 4](#)

[Set Time Zone # 5](#)

[Set Time Zone # 6](#)

[Set Time Zone # 7](#)

### Media

[Assign Keypad Entry Codes](#)

[Assign Block Transmitters](#)

[Delete Entry Codes/Transmitters](#)

[Activate/Suspend a Transmitter](#)

[Page 2 --->](#)

Next is Set Holidays

## Set Holidays

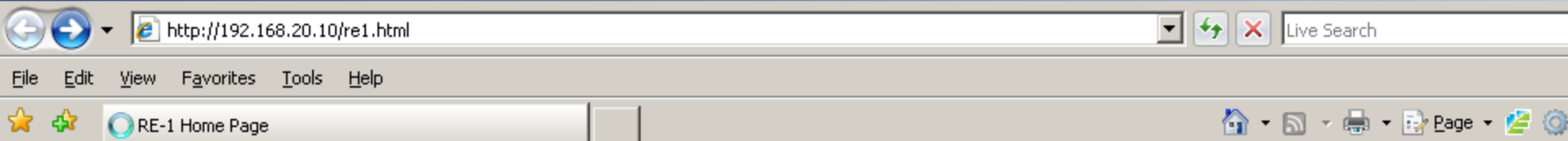
Format: MM/DD

- # 1
- # 2
- # 3
- # 4
- # 5
- # 6
- # 7
- # 8
- # 9
- # 10

A Holiday will override the day of the week as far as Time zones are concerned. An example might be an Automatic Gate Open Time zone. The gate automatically opens Mon-Fri 9-5. Thanksgiving we don't want the gate to open, so we make that date a Holiday.

Save

Back



## Linear Residential Entry System

Version 2.11

### System Configuration

[Change Master Code or Number of Entry Code Digits](#)

[Set Date & Time](#)

[Set Holidays](#)

[Keypad Setup](#)

[Assign Relay # 2 Function](#)

[Set Relay Tones](#)

[Relay Schedule](#)

[Configure Transmitter Buttons](#)

[Miscellaneous Options](#)

[Set Time Zone # 1](#)

[Set Time Zone # 2](#)

[Set Time Zone # 3](#)

[Set Time Zone # 4](#)

[Set Time Zone # 5](#)

[Set Time Zone # 6](#)

[Set Time Zone # 7](#)

### Media

[Assign Keypad Entry Codes](#)

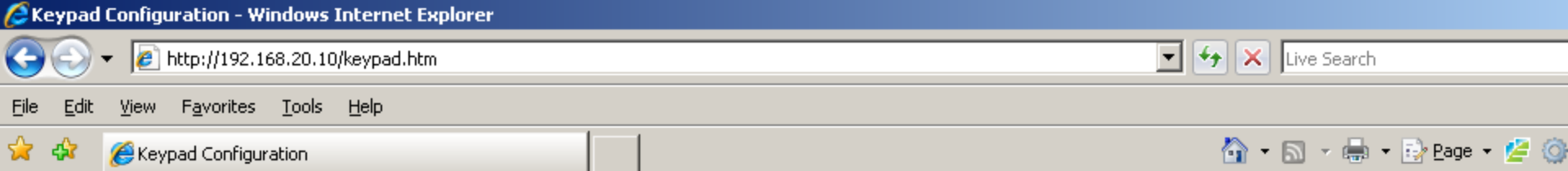
[Assign Block Transmitters](#)

[Delete Entry Codes/Transmitters](#)

[Activate/Suspend a Transmitter](#)

[Page 2 --->](#)

Next is Keypad Setup



# Keypad Configuration

## Main Keypad:

Relay #:

Time Zone:

## Remote Keypad:

Relay #:

Time Zone:

In Keypad Setup is where we can configure the main keypad located on the residential unit itself, and also a remote keypad,(AM-KP) that can be used to grant access to another area. Both keypads can be set to energize Relay A only, Relay B only, or Relay A or B dictated by Entry Code. You can also assign a Time zone to the individual Keypads allowing access with that keypad during certain times or days.

## Linear Residential Entry System

Version 2.11

### System Configuration

[Change Master Code or Number of Entry Code Digits](#)

[Set Date & Time](#)

[Set Holidays](#)

[Keypad Setup](#)

[Assign Relay # 2 Function](#)

[Set Relay Tones](#)

[Relay Schedule](#)

[Configure Transmitter Buttons](#)

[Miscellaneous Options](#)

[Set Time Zone # 1](#)

[Set Time Zone # 2](#)

[Set Time Zone # 3](#)

[Set Time Zone # 4](#)

[Set Time Zone # 5](#)

[Set Time Zone # 6](#)

[Set Time Zone # 7](#)

### Media

[Assign Keypad Entry Codes](#)

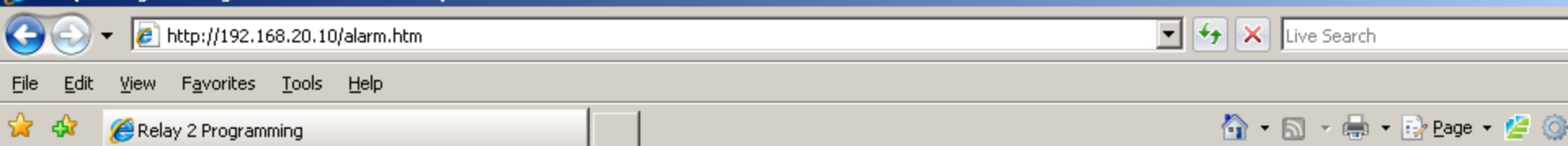
[Assign Block Transmitters](#)

[Delete Entry Codes/Transmitters](#)

[Activate/Suspend a Transmitter](#)

[Page 2 --->](#)

Assign Relay # 2 Function



## Relay 2 Programming

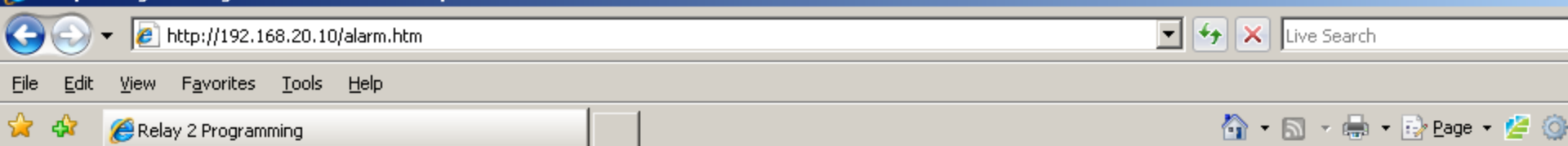
Relay # 2 Function:

Gate Controller  
Shunt of Main Relay Sense  
Obstacle Detector  
Alarm

Alarm Function:

- ☒ Forced Entry
- ☒ Door Ajar
- ☒ Keypad Lockout
- ☒ Remote Keypad Lockout
- ☐ Driveway Sensor

In Relay 2 Programming we can set the relay for Gate Controller,(Access Relay), Shunt,(Activates whenever Relay 1 Activates), Obstacle Detector, (Activates when reception of MGT Transmitter is detected, or Alarm. Alarm will activate Relay 2 under the following conditions.



## Relay 2 Programming

Relay # 2 Function: Gate Controller

Pick as many as apply

Alarm Function:

- ☐ None
- ☒ Forced Entry
- ☒ Door Ajar
- ☒ Keypad Lockout
- ☒ Remote Keypad Lockout
- ☒ Driveway Sensor

Save

Back

Relay 2 energizes with a Forced Entry, (Sense #1 input opens without Relay 1 energizing. Door Ajar, (Sense # 1 stays open for more than 1 minute after Relay 1 activation. Keypad Lockout, (Relay 2 energizes after too many wrong entry code attempts on Main Keypad. Remote Keypad Lockout, (Relay 2 energizes after too many wrong attempts on Remote Keypad Lockout. Driveway Sensor, (Relay 2 energizes when sense # 2 input closes.





# Linear Residential Entry System

Version 2.11

## System Configuration

[Change Master Code or Number of Entry Code Digits](#)

[Set Date & Time](#)

[Set Holidays](#)

[Keypad Setup](#)

[Assign Relay # 2 Function](#)

[Set Relay Tones](#)

[Relay Schedule](#)

[Configure Transmitter Buttons](#)

[Miscellaneous Options](#)

[Set Time Zone # 1](#)

[Set Time Zone # 2](#)

[Set Time Zone # 3](#)

[Set Time Zone # 4](#)

[Set Time Zone # 5](#)

[Set Time Zone # 6](#)

[Set Time Zone # 7](#)

## Media

[Assign Keypad Entry Codes](#)

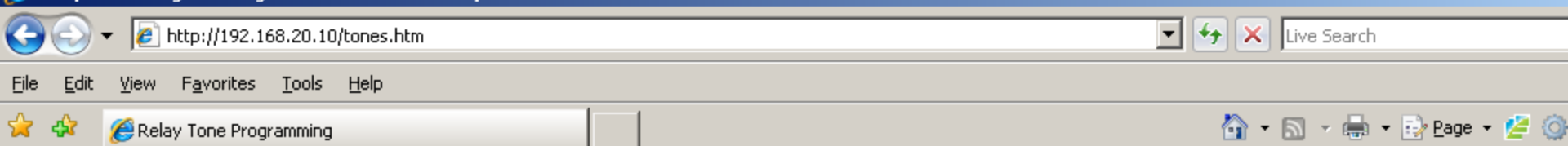
[Assign Block Transmitters](#)

[Delete Entry Codes/Transmitters](#)

[Activate/Suspend a Transmitter](#)

[Page 2 --->](#)

Set Relay Tones



## Relay Tone Programming

Relay Tone Duration:

Relay One Tone: ☒ Enabled ☐ Disabled

Relay Two Tone: ☐ Enabled ☒ Disabled

Save

Back

In Relay Tone Programming we can set a tone whenever Relay 1 or Relay 2 Activates. Tone can be set from 1 -15 Seconds.

## Linear Residential Entry System

Version 2.11

### System Configuration

[Change Master Code or Number of Entry Code Digits](#)

[Set Date & Time](#)

[Set Holidays](#)

[Keypad Setup](#)

[Assign Relay # 2 Function](#)

[Set Relay Tones](#)

[Relay Schedule](#)

[Configure Transmitter Buttons](#)

[Miscellaneous Options](#)

[Set Time Zone # 1](#)

[Set Time Zone # 2](#)

[Set Time Zone # 3](#)

[Set Time Zone # 4](#)

[Set Time Zone # 5](#)

[Set Time Zone # 6](#)

[Set Time Zone # 7](#)

### Media

[Assign Keypad Entry Codes](#)

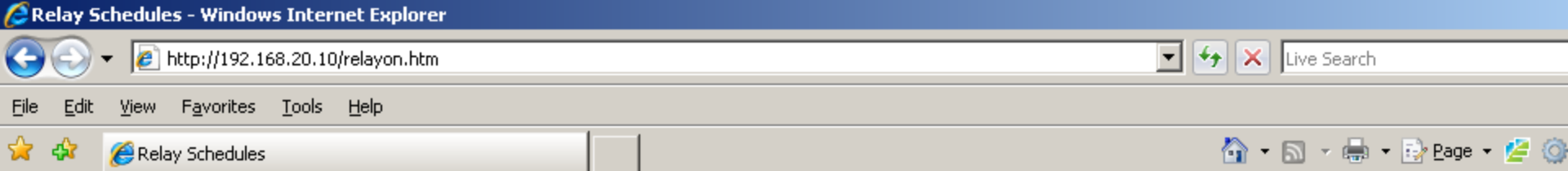
[Assign Block Transmitters](#)

[Delete Entry Codes/Transmitters](#)

[Activate/Suspend a Transmitter](#)

[Page 2 --->](#)

Relay Schedule



## Relay Schedules

### Relay 1

On Time(Sec):

#### Automatic Open Time:

- ☒ None
- ☐ Time Zone 1
- ☐ Time Zone 2
- ☐ Time Zone 3
- ☐ Time Zone 4
- ☐ Time Zone 5
- ☐ Time Zone 6
- ☐ Time Zone 7

### Relay 2

On Time(Sec):

#### Automatic Open Time:

- ☒ None
- ☐ Time Zone 1
- ☐ Time Zone 2
- ☐ Time Zone 3
- ☐ Time Zone 4
- ☐ Time Zone 5
- ☐ Time Zone 6
- ☐ Time Zone 7

With Relay Schedules we can set the duration Relay 1 or Relay 2 Activates. We can also create an Automatic Open Time that will automatically energize Relay 1 or Relay 2 with a preprogrammed Time Zone.

## Linear Residential Entry System

Version 2.11

### System Configuration

[Change Master Code or Number of Entry Code Digits](#)

[Set Date & Time](#)

[Set Holidays](#)

[Keypad Setup](#)

[Assign Relay # 2 Function](#)

[Set Relay Tones](#)

[Relay Schedule](#)

[Configure Transmitter Buttons](#)

[Miscellaneous Options](#)

[Set Time Zone # 1](#)

[Set Time Zone # 2](#)

[Set Time Zone # 3](#)

[Set Time Zone # 4](#)

[Set Time Zone # 5](#)

[Set Time Zone # 6](#)

[Set Time Zone # 7](#)

### Media

[Assign Keypad Entry Codes](#)

[Assign Block Transmitters](#)

[Delete Entry Codes/Transmitters](#)

[Activate/Suspend a Transmitter](#)

[Page 2 --->](#)

[Configure Transmitter Buttons](#)

Transmitter Button Mapping - Windows Internet Explorer

http://192.168.20.10/BMAP.htm

File Edit View Favorites Tools Help

Transmitter Button Mapping

### Transmitter Button Mapping

Top Button: Relays A and B

Upper Left: Relay A

Upper Right: Relay B

Lower Left: None

Lower Right: None

Save Back

With Transmitter Button Mapping we can dictate which buttons on the Transmitter will activate which relay. Options are None, Relay A, Relay B, or Relay A and Relay B

## Linear Residential Entry System

Version 2.11

### System Configuration

[Change Master Code or Number of Entry Code Digits](#)

[Set Date & Time](#)

[Set Holidays](#)

[Keypad Setup](#)

[Assign Relay # 2 Function](#)

[Set Relay Tones](#)

[Relay Schedule](#)

[Configure Transmitter Buttons](#)

[Miscellaneous Options](#)

[Set Time Zone # 1](#)

[Set Time Zone # 2](#)

[Set Time Zone # 3](#)

[Set Time Zone # 4](#)

[Set Time Zone # 5](#)

[Set Time Zone # 6](#)

[Set Time Zone # 7](#)

### Media

[Assign Keypad Entry Codes](#)

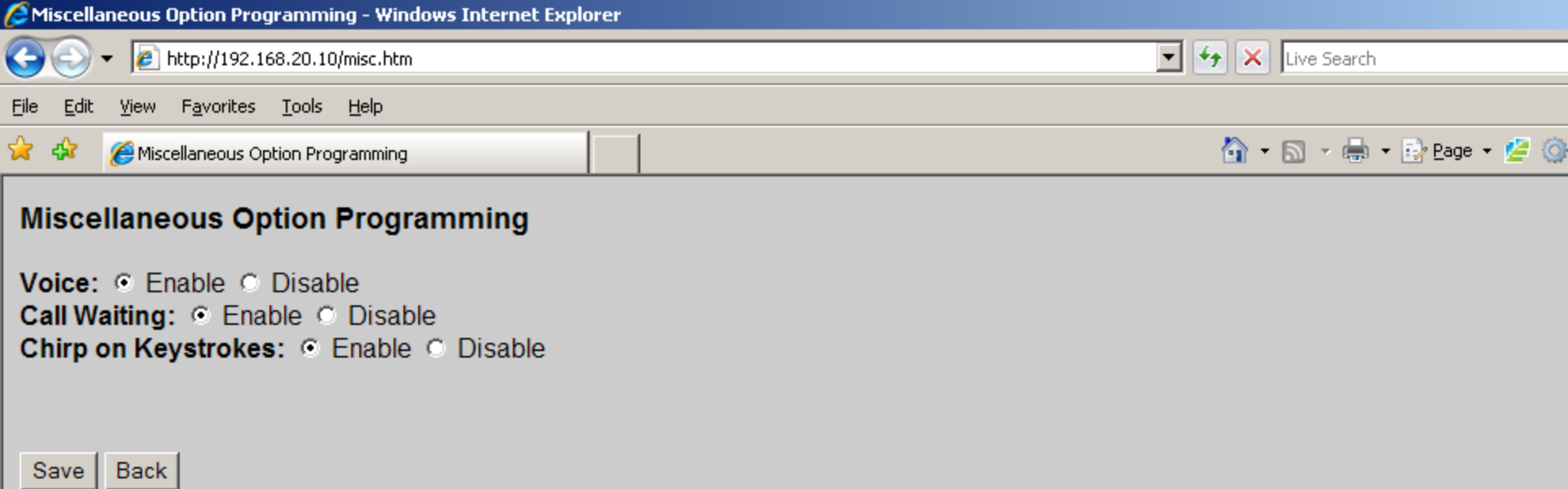
[Assign Block Transmitters](#)

[Delete Entry Codes/Transmitters](#)

[Activate/Suspend a Transmitter](#)

[Page 2 --->](#)

## Miscellaneous Options



In the Miscellaneous Option Programming section we can Enable or Disable the Digital Synthesized Voice, the Call Waiting Feature or the Chirp on Keystrokes function.



# Linear Residential Entry System

Version 2.11

## System Configuration

[Change Master Code or Number of Entry Code Digits](#)

[Set Date & Time](#)

[Set Holidays](#)

[Keypad Setup](#)

[Assign Relay # 2 Function](#)

[Set Relay Tones](#)

[Relay Schedule](#)

[Configure Transmitter Buttons](#)

[Miscellaneous Options](#)

[Set Time Zone # 1](#)

[Set Time Zone # 2](#)

[Set Time Zone # 3](#)

[Set Time Zone # 4](#)

[Set Time Zone # 5](#)

[Set Time Zone # 6](#)

[Set Time Zone # 7](#)

## Media

[Assign Keypad Entry Codes](#)

[Assign Block Transmitters](#)

[Delete Entry Codes/Transmitters](#)

[Activate/Suspend a Transmitter](#)

[Page 2 --->](#)

Set Time Zone #1

Time Zone Programming - Windows Internet Explorer

http://192.168.20.10/tzone1.htm

File Edit View Favorites Tools Help

Time Zone Programming

## Time Zone Programming

**Time Zone Number: 1**

**Days:** ☐ SUN ☐ MON ☐ TUE ☐ WED ☐ THU ☐ FRI ☐ SAT ☐ HOL

**Start Time:**  ☒ AM ☐ PM

**End Time:**  ☒ AM ☐ PM

In Time Zone Programming we can create Time Zones that can be used for,

- 1) Restricting Access
- 2) Auto Gate/Door Opening
- 3) Call Forwarding Schedule
- 4) Assigning Access Groups for Transmitters
- 5) Assigning Temporary Entry Codes
- 6) Setting the Do Not Disturb feature.

Time Zone Programming

Time Zone Number: 1

Days: ☐ SUN ☒ MON ☒ TUE ☒ WED ☒ THU ☒ FRI ☒ SAT ☐ HOL

Start Time:  ☒ AM ☐ PM

End Time:  ☐ AM ☒ PM

In this application, we have created a Time Zone. It is set Monday through Friday, 9:00 AM-5:00PM. The RE-1/2 will hold 7 Time Zones

## Linear Residential Entry System

Version 2.11

### System Configuration

[Change Master Code or Number of Entry Code Digits](#)

[Set Date & Time](#)

[Set Holidays](#)

[Keypad Setup](#)

[Assign Relay # 2 Function](#)

[Set Relay Tones](#)

[Relay Schedule](#)

[Configure Transmitter Buttons](#)

[Miscellaneous Options](#)

[Set Time Zone # 1](#)

[Set Time Zone # 2](#)

[Set Time Zone # 3](#)

[Set Time Zone # 4](#)

[Set Time Zone # 5](#)

[Set Time Zone # 6](#)

[Set Time Zone # 7](#)

### Media

[Assign Keypad Entry Codes](#)

[Assign Block Transmitters](#)

[Delete Entry Codes/Transmitters](#)

[Activate/Suspend a Transmitter](#)

[Page 2 --->](#)

The next section is Media

## Linear Residential Entry System

Version 2.11

### System Configuration

[Change Master Code or Number of Entry Code Digits](#)

[Set Date & Time](#)

[Set Holidays](#)

[Keypad Setup](#)

[Assign Relay # 2 Function](#)

[Set Relay Tones](#)

[Relay Schedule](#)

[Configure Transmitter Buttons](#)

[Miscellaneous Options](#)

[Set Time Zone # 1](#)

[Set Time Zone # 2](#)

[Set Time Zone # 3](#)

[Set Time Zone # 4](#)

[Set Time Zone # 5](#)

[Set Time Zone # 6](#)

[Set Time Zone # 7](#)

### Media

[Assign Keypad Entry Codes](#)

[Assign Block Transmitters](#)

[Delete Entry Codes/Transmitters](#)

[Activate/Suspend a Transmitter](#)

[Page 2 --->](#)

Within Media, the first subsection is [Assign Keypad Entry Codes](#)

## Keypad Entry Code

☐ Read Entry Code Record

Entry Code:

Authorized Relays:

Time Zone Number:

## Temporary Users

Number of Accesses:



Starting From:

Ending On:

The Read Entry Code Record option is not used at this time and should not be selected.

The RE-1/RE-2 will hold up to 100 Entry Codes

## Keypad Entry Code

☐ Read Entry Code RecordEntry Code: Authorized Relays: Time Zone Number:   


- Relay 1
- Relay 2
- Both
- Priority User

### Temporary Users

Number of Accesses: Starting From: Ending On: 

Authorized Relays: These options include Relay 1, Relay 2, Both Relays, or Priority User. If Priority User is selected, Relay 1 will toggle when Entry Code is entered.

# Keypad Entry Code

☐ Read Entry Code Record

Entry Code:

Authorized Relays:

Time Zone Number:

Temporary Users

Number of Accesses

Starting From:

Ending On:

Save Home

A Time Zone can be applied to an Entry Code, so the Entry Code only works during specific days or times





## Keypad Entry Code

☐ Read Entry Code Record

Entry Code:

Authorized Relays:

Time Zone Number:

## Temporary Users

Number of Accesses:

Starting From:

Ending On:

[Save](#)[Home](#)

Temporary Users: An Entry code can be programmed to function on a temporary basis. This can be controlled with Number of uses,(1-255) and by activation and ending date.

## Linear Residential Entry System

Version 2.11

### System Configuration

[Change Master Code or Number of Entry Code Digits](#)

[Set Date & Time](#)

[Set Holidays](#)

[Keypad Setup](#)

[Assign Relay # 2 Function](#)

[Set Relay Tones](#)

[Relay Schedule](#)

[Configure Transmitter Buttons](#)

[Miscellaneous Options](#)

[Set Time Zone # 1](#)

[Set Time Zone # 2](#)

[Set Time Zone # 3](#)

[Set Time Zone # 4](#)

[Set Time Zone # 5](#)

[Set Time Zone # 6](#)

[Set Time Zone # 7](#)

### Media

[Assign Keypad Entry Codes](#)

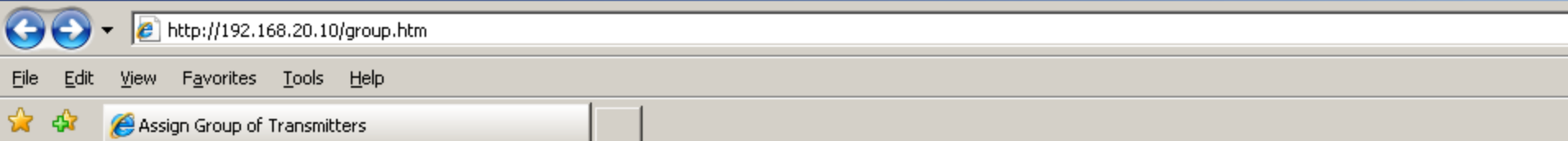
[Assign Block Transmitters](#)

[Delete Entry Codes/Transmitters](#)

[Activate/Suspend a Transmitter](#)

[Page 2 --->](#)

[Assign Block Transmitters](#)



## Assign Group of Transmitters

Facility Code:

Transmitter ID:

Number in the Group:

Time Zone:  Time Zone:

Save

Back

In the Assign Group of Transmitters section we have  
Facility Code: A Facility Code of 0-15 can be entered. If the field is left blank, the Facility Code is ignored.

Transmitter ID: Block Coded Transmitters Codes are sequential in number. The codes can be found on the transmitter itself. In this field we would put the lowest number of the Block.

Number in the Group: How many transmitters are in the Block. The RE-1/2 will hold up to 100 Transmitters.

Time Zone: We can have up to 2 time zones assigned to a block of transmitters in order to dictate what days and times the transmitters will be active. If Time Zone 1 is left blank, Time Zone 2 is ignored. If both fields are left blank, transmitters are always active.

## Linear Residential Entry System

Version 2.11

### System Configuration

[Change Master Code or Number of Entry Code Digits](#)

[Set Date & Time](#)

[Set Holidays](#)

[Keypad Setup](#)

[Assign Relay # 2 Function](#)

[Set Relay Tones](#)

[Relay Schedule](#)

[Configure Transmitter Buttons](#)

[Miscellaneous Options](#)

[Set Time Zone # 1](#)

[Set Time Zone # 2](#)

[Set Time Zone # 3](#)

[Set Time Zone # 4](#)

[Set Time Zone # 5](#)

[Set Time Zone # 6](#)

[Set Time Zone # 7](#)

### Media

[Assign Keypad Entry Codes](#)

[Assign Block Transmitters](#)

[Delete Entry Codes/Transmitters](#)

[Activate/Suspend a Transmitter](#)

[Page 2 --->](#)

Delete Entry Codes/Transmitters

## Delete Entry Code/Transmitters

Delete Entry Code:  ☐ All

☐ Delete all group transmitters?

Save

Back

On this page we can delete a single Entry Code, All Entry Codes, or all Block Transmitters

## Linear Residential Entry System

Version 2.11

### System Configuration

[Change Master Code or Number of Entry Code Digits](#)

[Set Date & Time](#)

[Set Holidays](#)

[Keypad Setup](#)

[Assign Relay # 2 Function](#)

[Set Relay Tones](#)

[Relay Schedule](#)

[Configure Transmitter Buttons](#)

[Miscellaneous Options](#)

[Set Time Zone # 1](#)

[Set Time Zone # 2](#)

[Set Time Zone # 3](#)

[Set Time Zone # 4](#)

[Set Time Zone # 5](#)

[Set Time Zone # 6](#)

[Set Time Zone # 7](#)

### Media

[Assign Keypad Entry Codes](#)

[Assign Block Transmitters](#)

[Delete Entry Codes/Transmitters](#)

[Activate/Suspend a Transmitter](#)

[Page 2 --->](#)

Activate/Suspend a Transmitter

## Activate/Suspend a Single Transmitter

Facility Code:

Transmitter ID:

☒ Activate ☐ Suspend

Save

Back

On this page we can Activate or Suspend a Single Transmitter

## Linear Residential Entry System

Version 2.11

### System Configuration

[Change Master Code or Number of Entry Code Digits](#)

[Set Date & Time](#)

[Set Holidays](#)

[Keypad Setup](#)

[Assign Relay # 2 Function](#)

[Set Relay Tones](#)

[Relay Schedule](#)

[Configure Transmitter Buttons](#)

[Miscellaneous Options](#)

[Set Time Zone # 1](#)

[Set Time Zone # 2](#)

[Set Time Zone # 3](#)

[Set Time Zone # 4](#)

[Set Time Zone # 5](#)

[Set Time Zone # 6](#)

[Set Time Zone # 7](#)

### Media

[Assign Keypad Entry Codes](#)

[Assign Block Transmitters](#)

[Delete Entry Codes/Transmitters](#)

[Activate/Suspend a Transmitter](#)

[Page 2 --->](#)



## Linear Residential Entry System

### Telephone Entry Configuration

[Visitor Call Options](#)[Call Forward/Do Not Disturb](#)[Guest House #1 Programming](#)[Guest House #2 Programming](#)[Guest House #3 Programming](#)[Dialing Method/Modem Answering](#)[Configure Telephone Commands](#)

### Reports

[View System Configuration](#)[View Entry Codes](#)[View Transmitters](#)[List Log Entries 1 - 50](#)[List Log Entries 51 - 100](#)[List Log Entries 101 - 150](#)[List Log Entries 151 - 200](#)[List Log Entries 201 - 250](#)[List Log Entries 251 - 300](#)[List Log Entries 301 - 350](#)[List Log Entries 351 - 400](#)[List Log Entries 401 - 450](#)[<-Page 1](#)

Telephone Entry Configuration  
Visitor Call Options

## Visitor Call Programming

Visitor Call Ring Count:

Visitor Call Time Limit:  Seconds

Visitor Call Ring Count: This setting is used for how many rings the RE-1/2 will ring the local telephones within the house before a Call Forward or a Disconnect is achieved. This can be set for 1-15 rings.

Visitor Call Time Limit: Used for visitor talk time limits. Can be set for 15-255 seconds.

## Linear Residential Entry System

### Telephone Entry Configuration

[Visitor Call Options](#)[Call Forward/Do Not Disturb](#)[Guest House #1 Programming](#)[Guest House #2 Programming](#)[Guest House #3 Programming](#)[Dialing Method/Modem Answering](#)[Configure Telephone Commands](#)

### Reports

[View System Configuration](#)[View Entry Codes](#)[View Transmitters](#)[List Log Entries 1 - 50](#)[List Log Entries 51 - 100](#)[List Log Entries 101 - 150](#)[List Log Entries 151 - 200](#)[List Log Entries 201 - 250](#)[List Log Entries 251 - 300](#)[List Log Entries 301 - 350](#)[List Log Entries 351 - 400](#)[List Log Entries 401 - 450](#)[<-Page 1](#)

Call Forward/Do Not Disturb

## Call Forwarding Info

Call Enable State:	<input type="text" value="Disabled"/>
Time Zone Number:	<input type="text" value="Disabled"/>
Telephone Number:	<input type="text" value="Unconditional Enable"/>
Telephone Ext #:	<input type="text" value="Enable by Time Zone"/>
Extension Delay :	<input type="text" value="Call Forward, if No Answer"/>

## Do Not Disturb

Do Not Disturb Mode:	<input type="text" value="Disabled"/>
Time Zone:	<input type="text" value="None"/>

Under the Call Forwarding Info, Call Enable State: This can be set for Disable,(No call Forwarding), Unconditional Enable,(Call Forward always on), Enable by Time Zone,(Call Forward during specific Days and Times, or Call Forward if No Answer, RE-1/2 will Call Forward after Maximum Number of Visitor Rings has been reached).



http://192.168.20.10/callfwd.htm

File Edit View Favorites Tools Help



Call Forwarding Info

## Call Forwarding Info

Call Enable State: Disabled

Time Zone Number: None

Telephone Number: None

Telephone Ext #:

Extension Delay :

Do Not Disturb

Do Not Disturb Mode: Disabled

Time Zone: None

None

Time Zone 1

Time Zone 2

Time Zone 3

Time Zone 4

Time Zone 5

Time Zone 6

Time Zone 7

Save

Back

Time Zone Number: If Call Forwarding was enabled by a Time Zone, this is where we assign the Time Zone.

## Call Forwarding Info

Call Enable State: Time Zone Number: Telephone Number: Telephone Ext #: Extension Delay : 

## Do Not Disturb

Do Not Disturb Mode: Time Zone:  

Telephone Number: The phone number the RE1/2 is Call Forwarding to,(up to 11 digits).

Telephone Ext #: Up to a 4 digit Extension if required.

Extension Delay: If a delay is required between telephone number and extension. 1-25 seconds.

## Call Forwarding Info

Call Enable State: Time Zone Number: Telephone Number: Telephone Ext #: Extension Delay : 

## Do Not Disturb

Do Not Disturb Mode: Time Zone:   
  
 

Do Not Disturb: If turned on, when visitor presses call button, RE-1/2 will annunciate "Do Not Disturb Resident" and house will not be called.  
Can be Disabled, Turned on by Time Zone, or Always on

## Call Forwarding Info

Call Enable State:

Time Zone Number:

Telephone Number:

Telephone Ext #:

Extension Delay :

## Do Not Disturb

Do Not Disturb Mode:

Time Zone:

- None
- Time Zone 1
- Time Zone 2
- Time Zone 3
- Time Zone 4
- Time Zone 5
- Time Zone 6
- Time Zone 7

Time Zone: Select which Time Zone if Do Not Disturb Mode activated by Time Zone.



## Linear Residential Entry System

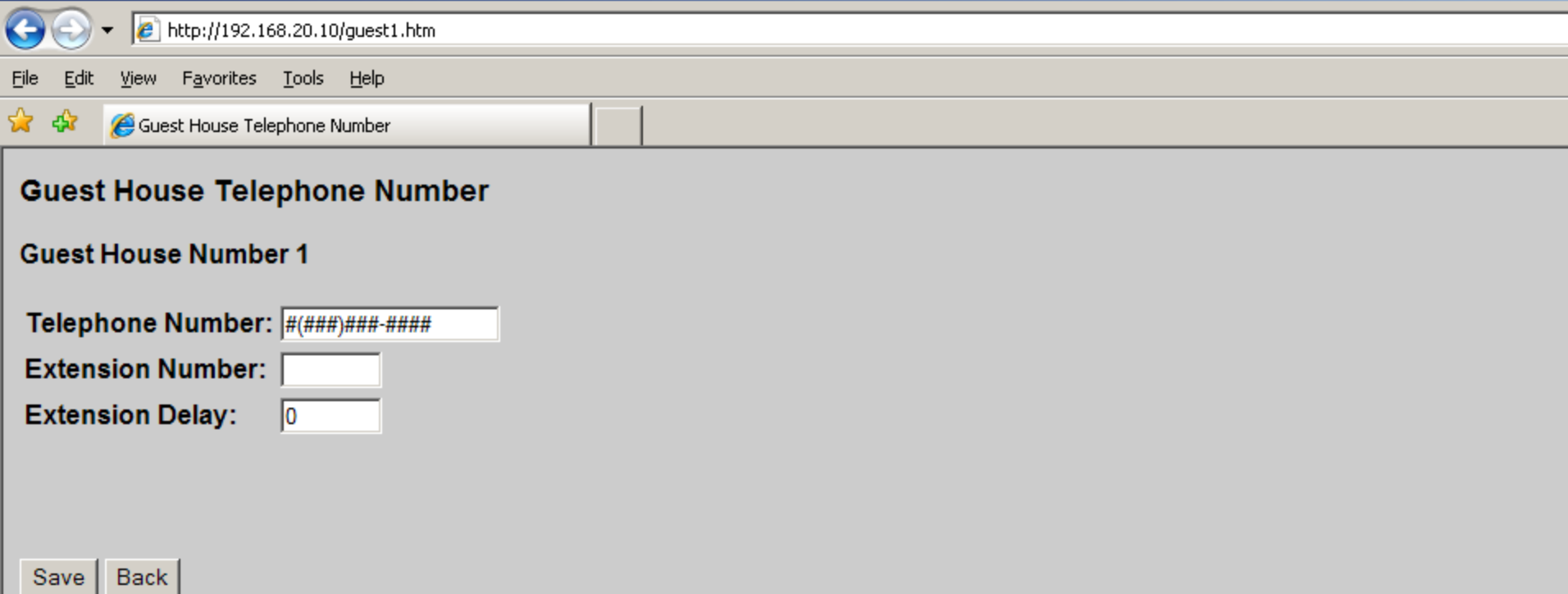
### Telephone Entry Configuration

[Visitor Call Options](#)[Call Forward/Do Not Disturb](#)[Guest House #1 Programming](#)[Guest House #2 Programming](#)[Guest House #3 Programming](#)[Dialing Method/Modem Answering](#)[Configure Telephone Commands](#)

### Reports

[View System Configuration](#)[View Entry Codes](#)[View Transmitters](#)[List Log Entries 1 - 50](#)[List Log Entries 51 - 100](#)[List Log Entries 101 - 150](#)[List Log Entries 151 - 200](#)[List Log Entries 201 - 250](#)[List Log Entries 251 - 300](#)[List Log Entries 301 - 350](#)[List Log Entries 351 - 400](#)[List Log Entries 401 - 450](#)[<-Page 1](#)

Guest House #1 Programming.



The screenshot shows a web browser window with the title 'Guest House Telephone Number - Windows Internet Explorer'. The address bar displays 'http://192.168.20.10/guest1.htm'. The browser's menu bar includes 'File', 'Edit', 'View', 'Favorites', 'Tools', and 'Help'. Below the menu bar is a toolbar with a star icon, a plus icon, and a button labeled 'Guest House Telephone Number'. The main content area has a light gray background and contains the following text and form elements:

**Guest House Telephone Number**

**Guest House Number 1**

Telephone Number:

Extension Number:

Extension Delay:

At the bottom of the form are two buttons: 'Save' and 'Back'.

The RE-1/2 has the capability to call 3 additional phone numbers in addition to house in shared line mode. Visitor would select 1# for alternate number 1, 2# for number 2, and 3# for number 3.

Telephone Number: Phone number for Guest House.

Extension Number: Up to 4 digit Extension if required.

Extension Delay: 1-25 second delay between phone number and extension if required.

Repeat steps for Guest House 2 and 3 if required.

## Linear Residential Entry System

### Telephone Entry Configuration

[Visitor Call Options](#)[Call Forward/Do Not Disturb](#)[Guest House #1 Programming](#)[Guest House #2 Programming](#)[Guest House #3 Programming](#)[Dialing Method/Modem Answering](#)[Configure Telephone Commands](#)

### Reports

[View System Configuration](#)[View Entry Codes](#)[View Transmitters](#)[List Log Entries 1 - 50](#)[List Log Entries 51 - 100](#)[List Log Entries 101 - 150](#)[List Log Entries 151 - 200](#)[List Log Entries 201 - 250](#)[List Log Entries 251 - 300](#)[List Log Entries 301 - 350](#)[List Log Entries 351 - 400](#)[List Log Entries 401 - 450](#)[<-Page 1](#)

Dialing Method/Modem Answering.



## Modem Programming

**Modem answer phone:** ☒ Yes

**Dialing Method:** ☐ Pulse ☒ Tone

Modem Programming: On this page we can turn the on board modem on the RE-1/2 on or off, if modem is turned off, programming can only be accomplished locally on front keypad.

We can also select which dialing method will be used from the RE-1/2, Pulse or Tone.

## Linear Residential Entry System

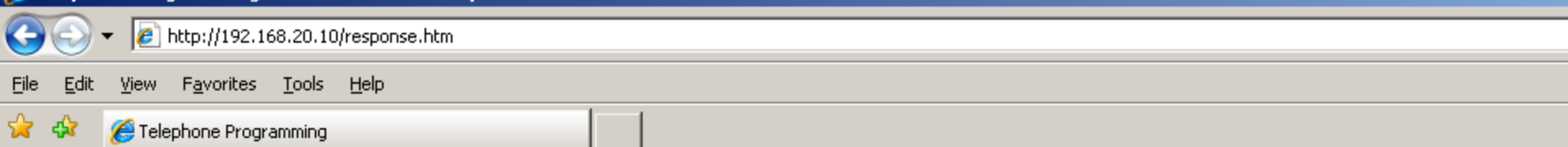
### Telephone Entry Configuration

[Visitor Call Options](#)[Call Forward/Do Not Disturb](#)[Guest House #1 Programming](#)[Guest House #2 Programming](#)[Guest House #3 Programming](#)[Dialing Method/Modem Answering](#)[Configure Telephone Commands](#)

### Reports

[View System Configuration](#)[View Entry Codes](#)[View Transmitters](#)[List Log Entries 1 - 50](#)[List Log Entries 51 - 100](#)[List Log Entries 101 - 150](#)[List Log Entries 151 - 200](#)[List Log Entries 201 - 250](#)[List Log Entries 251 - 300](#)[List Log Entries 301 - 350](#)[List Log Entries 351 - 400](#)[List Log Entries 401 - 450](#)[<-Page 1](#)

[Configure Telephone Commands](#)



## Telephone Programming

Choose the telephone command prefix: ##

Choose the Programming prefix:



Activate Relay 1: 1

Activate Relay 2: 2

Call Waiting: 6

Disconnect: 9

Save Back

On the Telephone Programming page, we see, Choose the telephone command prefix: Used enter a command from a local telephone. Can be used to control relays or open voice communications, (Example, ##81# used to latch relay #1. If this command prefix is not desired, can be changed from ## to \*\*or \*# or #\*

## Telephone Programming

Choose the telephone command prefix: ## ▾

Choose the Programming prefix: ### ▾



Activate Relay 1: 1 ▾

Activate Relay 2: 2 ▾

Call Waiting: 6 ▾

Disconnect: 9 ▾

Save Back

Choose the Programming prefix: Used to enter programming mode. Can be changed from ### to \*\*\* or \*\*\* or ##\*

## Telephone Programming

Choose the telephone command prefix: ##

Choose the Programming prefix: ###

Activate Relay 1: 1

Activate Relay 2:

Call Waiting:

Disconnect:

- 1
- 2
- 3
- 4
- 5
- 6
- 7
- 8
- 9
- 0

Save Back

Activate Relay 1: Used for which telephone keys are used to grant access and control calls. Can also be changed to Activate Relay 2, Call Waiting, and Disconnect.



## Linear Residential Entry System

### Telephone Entry Configuration

[Visitor Call Options](#)[Call Forward/Do Not Disturb](#)[Guest House #1 Programming](#)[Guest House #2 Programming](#)[Guest House #3 Programming](#)[Dialing Method/Modem Answering](#)[Configure Telephone Commands](#)

### Reports

[View System Configuration](#)[View Entry Codes](#)[View Transmitters](#)[List Log Entries 1 - 50](#)[List Log Entries 51 - 100](#)[List Log Entries 101 - 150](#)[List Log Entries 151 - 200](#)[List Log Entries 201 - 250](#)[List Log Entries 251 - 300](#)[List Log Entries 301 - 350](#)[List Log Entries 351 - 400](#)[List Log Entries 401 - 450](#)[<-Page 1](#)

### Reports

[View System Configuration](#): The configuration of how the system is programmed.

[View Entry Codes](#): What Entry codes are programmed into the system.

[View Transmitters](#): What Transmitters are programmed into the system.

## Linear Residential Entry System

### Telephone Entry Configuration

[Visitor Call Options](#)[Call Forward/Do Not Disturb](#)[Guest House #1 Programming](#)[Guest House #2 Programming](#)[Guest House #3 Programming](#)[Dialing Method/Modem Answering](#)[Configure Telephone Commands](#)

### Reports

[View System Configuration](#)[View Entry Codes](#)[View Transmitters](#)[List Log Entries 1 - 50](#)[List Log Entries 51 - 100](#)[List Log Entries 101 - 150](#)[List Log Entries 151 - 200](#)[List Log Entries 201 - 250](#)[List Log Entries 251 - 300](#)[List Log Entries 301 - 350](#)[List Log Entries 351 - 400](#)[List Log Entries 401 - 450](#)[<-Page 1](#)

List Log Entries 1 - 50

RE-1 Log - Windows Internet Explorer

http://192.168.20.10/l1.htm

File Edit View Favorites Tools Help

RE-1 Log

### RE-1 Log

Date & Time	Event	Type	Detail	User ID
04/13/11 08:53:30 AM	Access:	Keypad User	Rel. Relay 1	001111
04/13/11 08:53:16 AM	Access:	Keypad User	Latch Relay 1	001111
04/13/11 08:53:06 AM	Access:	Keypad User	Rel. Relay 1	001111
04/13/11 08:51:54 AM	Access:	Keypad User	Latch Relay 1	001111
04/12/11 10:04:08 AM	Alarm:	Forced Open	Relay 2	
04/12/11 10:04:08 AM	Alarm:	Forced Open	Relay 1	
03/09/11 01:30:36 PM	Alarm:	Forced Open	Relay 2	
03/09/11 01:30:36 PM	Alarm:	Forced Open	Relay 1	
01/01/00 10:30:00 AM	Alarm:	Forced Open	Relay 2	

Ok

Lists the last 50 Events. The RE-1/2 will hold the last 450 Events.

